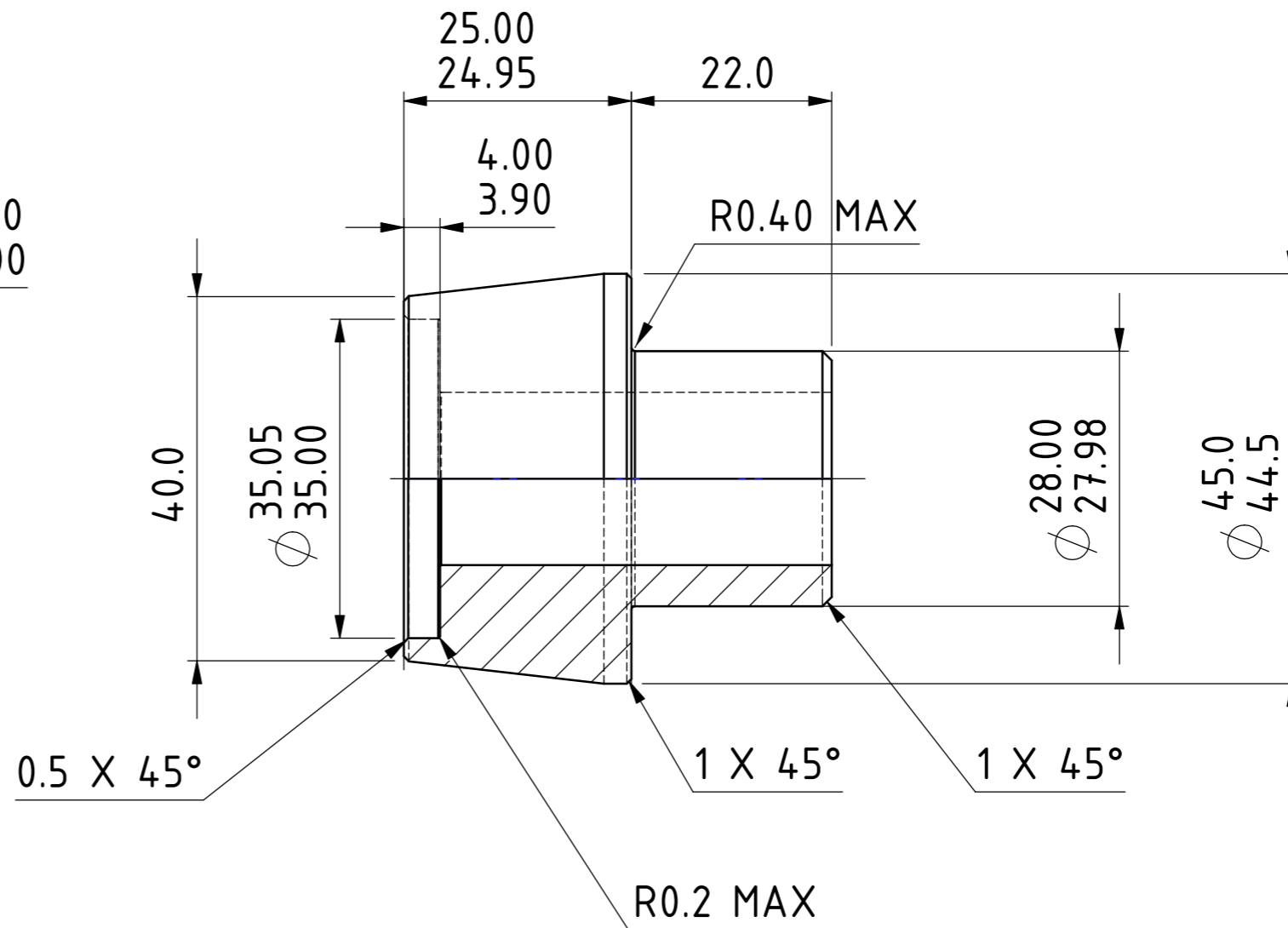
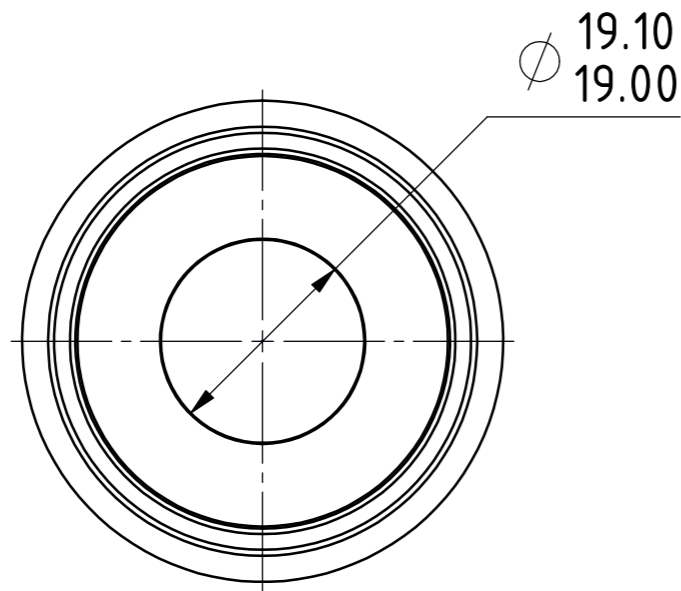


ISOMETRIC VIEW NOT TO SCALE  
FOR ENGINEERING REFERENCE ONLY



IF IN DOUBT ASK FOR CLARIFICATION

DRAWING TO BS8888

COMPONENT WEIGHT 148.03 GRAMS

SUPERTOOLROOM  
UNIT 4, SPRINGVALE TRADING EST  
PENISTONE, SHEFFIELD, ENGLAND S366HH  
INFO@BICYCLEMANUFACTURING.CO.UK

|         |       |       |         |        |
|---------|-------|-------|---------|--------|
| TOL UOS | 0.0   | ±0.25 | CAST    | ±1.0   |
|         | 0.00  | ±0.10 | DRAFT   | 3° TYP |
|         | 0.000 | ±0.05 | ANGULAR | ±0.5   |

|          |                     |       |
|----------|---------------------|-------|
| SURF FIN | TURNED MILLED BORED | 3.2µm |
|          | REAMED              | 0.8µm |
|          | GROUND HONED        | 0.4µm |

|         |     |            |
|---------|-----|------------|
| 3D CAD  | MMC | 16/02/2015 |
| DRAWN   | MMC | 16/02/2015 |
| APPVD   | MMC | 16/02/2015 |
| PUB REL | Y   |            |
| DEV REL | N   |            |

|                     |                          |
|---------------------|--------------------------|
| FINISH/TREAT/SPEC   | SEE MACHINING NOTES      |
| MATERIAL            | 303 ST ST FREE MACHINING |
| SPECIAL INSTRUCTION |                          |

|     |                                      |      |
|-----|--------------------------------------|------|
| CAD | 3D CAD MODEL TO BE TREATED AS MASTER | +0.2 |
|     | DXF AND PROFILE CUTTING TOLERANCE    | -0.2 |

CASTING'S, FORGING'S AND COMPOSITE  
MOULDINGS TO BE FREE FROM POROSITY  
AND VOIDS SEE DETAIL SPECIFICATION

|              |          |    |
|--------------|----------|----|
| PLM Software | SIEMENS  | NX |
| DASSAULT     | SYSTEMES |    |

MIL-TFD-41

|        |                    |                 |                                |
|--------|--------------------|-----------------|--------------------------------|
| THREAD | INTERNAL METRIC 6g | INTERNAL IMP 2a | NON HARD ANODIZING TO ISO 7599 |
|        | EXTERNAL METRIC 6H | EXTERNAL IMP 2B | HARD TYPE III TO ISO 10074     |
|        |                    |                 | SEE DETAIL IF OTHER            |

NON HARD ANODIZING TO ISO 7599  
HARD TYPE III TO ISO 10074  
SEE DETAIL IF OTHER

|                               |                             |                            |
|-------------------------------|-----------------------------|----------------------------|
| REMOVE ALL BURR'S SHARP EDGES | DO NOT SCALE DRAWING 1:1@A4 | ALL DIMENSIONS IN mm U.O.S |
|-------------------------------|-----------------------------|----------------------------|

ALL DIMENSIONS IN mm U.O.S

|                     |                        |
|---------------------|------------------------|
| DWG TITLE/PART NAME | HEAD SET PUCK RETAINER |
| DWG No:             | BML HS 001             |



A  
REVISION